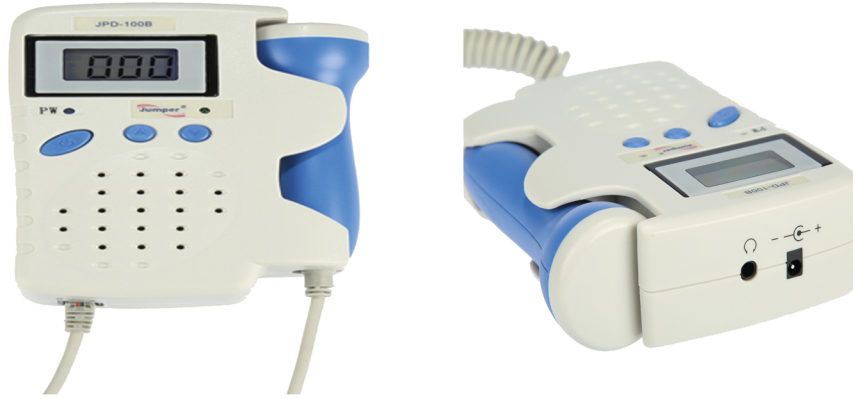


JPD-100B Fetal Doppler



Features

1. The ultrasound dosage is under 50% of the national ultrasonic power standard.
2. Light Weight, handset, portable
3. Large LCD display with blue backlight.
4. Built-in loudspeaker, more clearly loudly.
5. Support 2.5MHz waterproof probe; Accurate FHR detection with clear sound.
6. Monitor 12 weeks above unborn baby's blood wall pulsate.

Specification

1. Ultrasound probe: solid and durable, anti-shock, anti-falling down
2. Ultrasound frequency: 2.5MHz±3%
3. Ultrasound intensity: <math>< 2.5\text{mW/cm}^2</math>
4. FHR Scope: 50~210bpm
5. Power adapter: AC 220V 50Hz, DC12V (on request)
6. Rechargeable battery: 9.6V, 300mA
7. Size: 129mm*82mm*32mm
8. Weight: Main body 0.53kg
9. Temperature: 5-40°C
10. Humidity: 0~85%

فکله روم سهران - پلاک ۱۲۷ - مجتمع مهران - ط. ۲ - واحد ۱۳

☎ ۴۴۳۲۵۹۱۳-۵

✉ info@samanteb.ir

📄 ۴۴۳۲۸۷۸۵

🌐 www.samanteb.ir